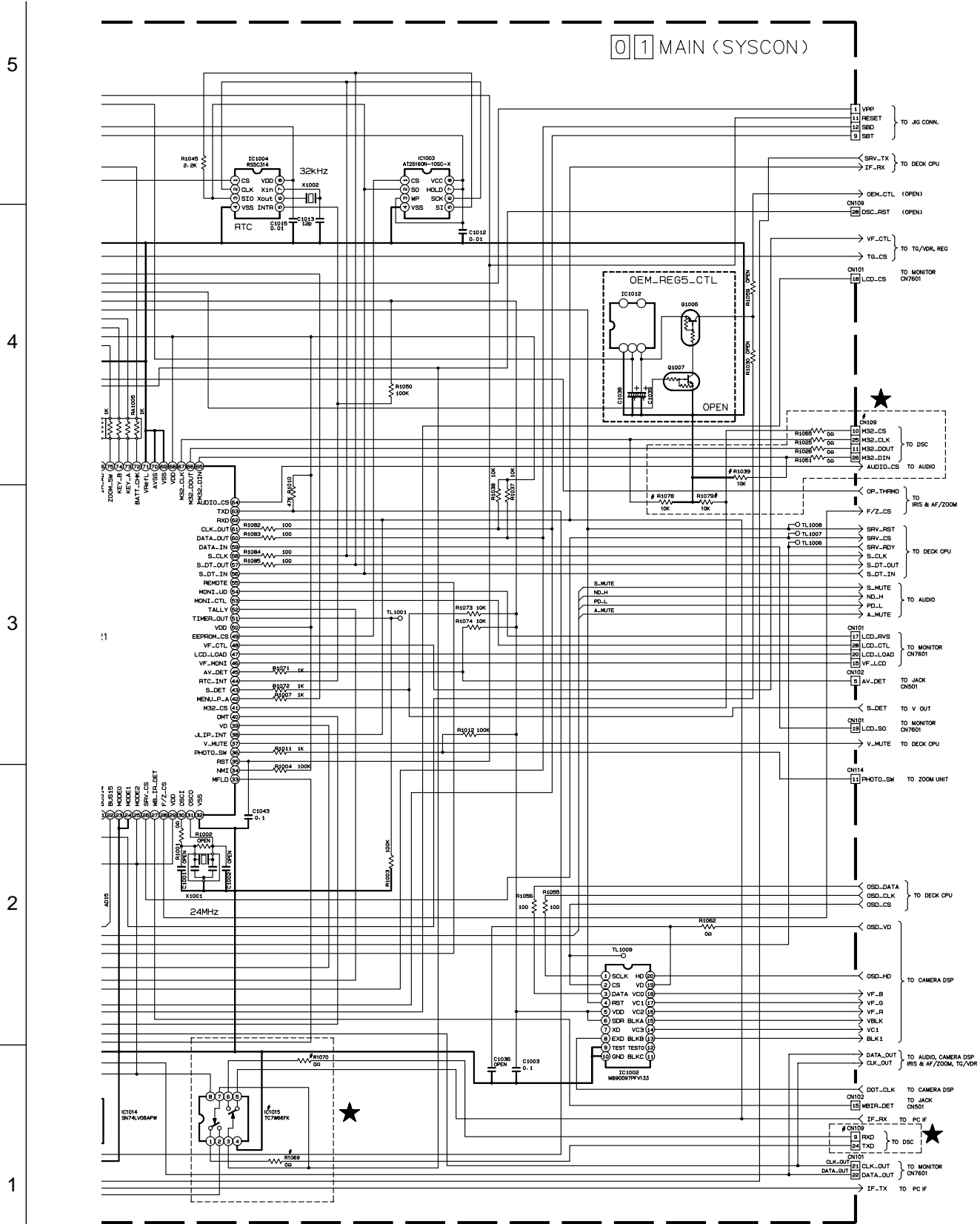




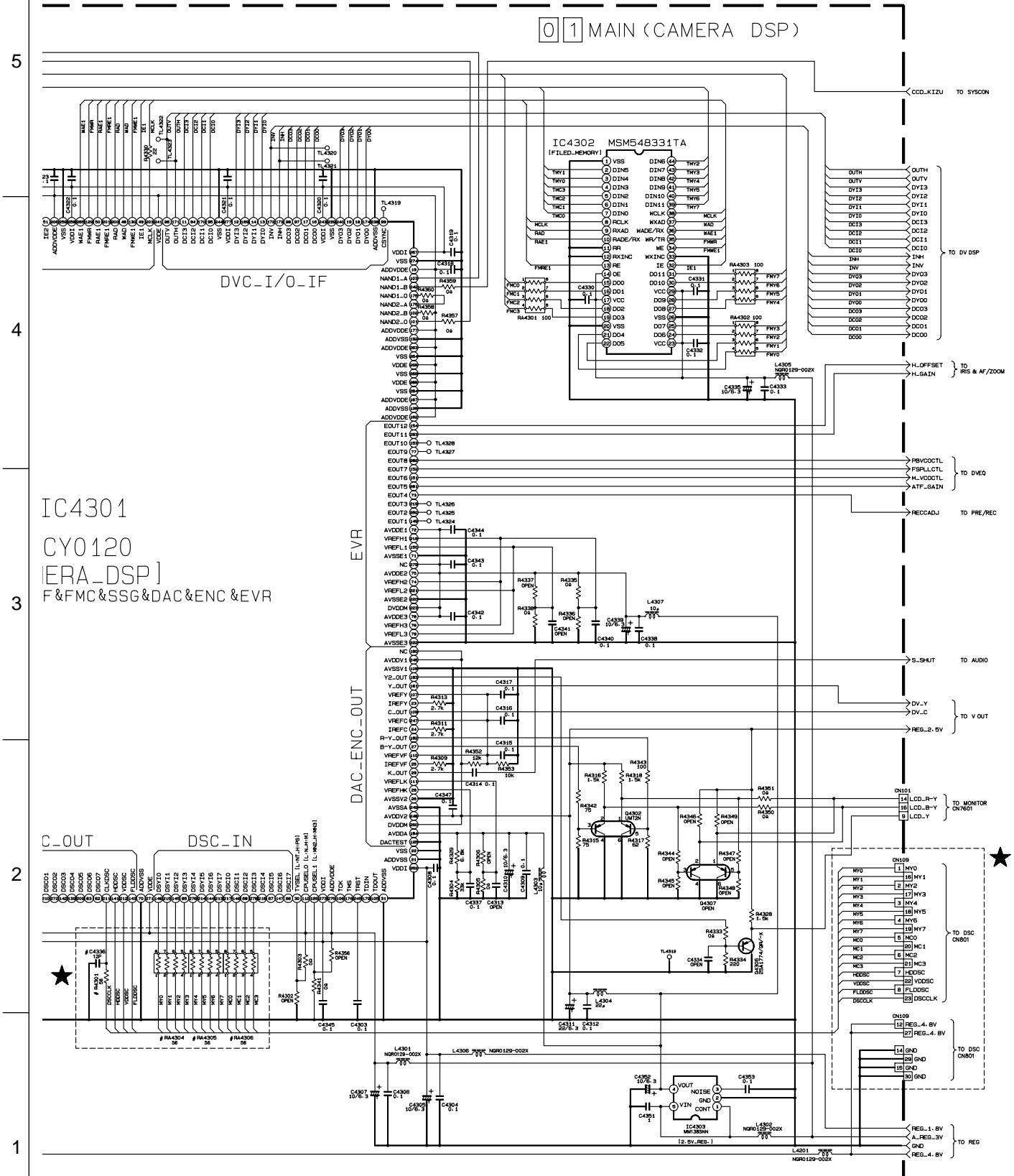
## 4.2 SYSCON SCHEMATIC DIAGRAM



NOTE : COMPARISON CHART OF MODELS & MARKS (#).

REF. NO	IC1015	R1039	R1069	R1078	CN109
MODELS	IC1015	R1039	R1069	R1078	CN109
GR-DM300/500	OPEN	USED	OPEN	USED	OPEN
GR-DVL800	USED	OPEN	USED	OPEN	USED

### 4.3 CAMERA DSP SCHEMATIC DIAGRAM



NOTE : COMPARISON CHART OF MODELS & MARKS (#).

REF. NO	RA4304	RA4306	C4336
MODELS	RA4301	RA4306	C4336
GR-DWL300/500	OPEN	OPEN	OPEN
GR-DWL800	USED	USED	USED

# 4.4 DSC SCHEMATIC DIAGRAM (FOR DVL800)

5

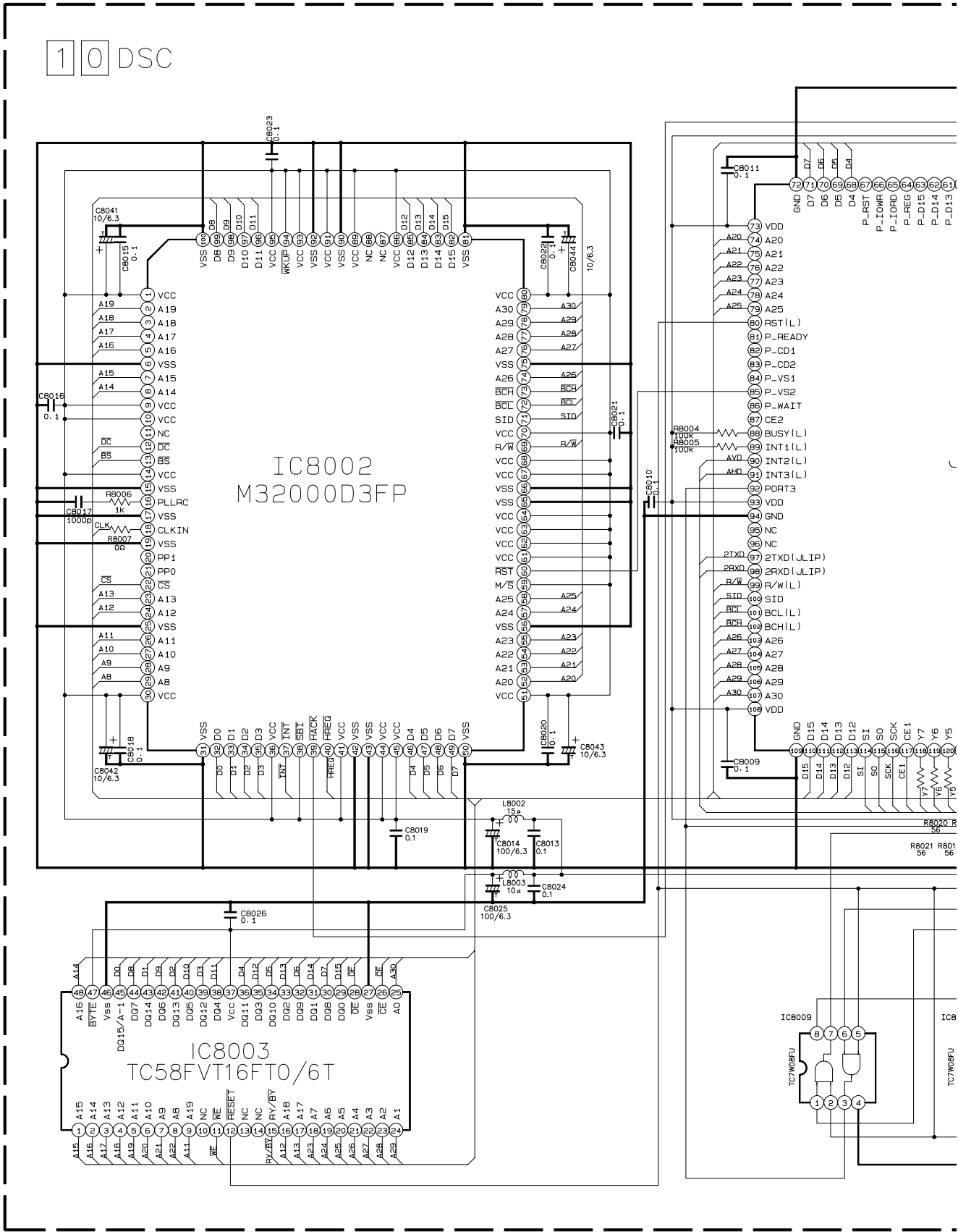
1 0 DSC

4

3

2

1



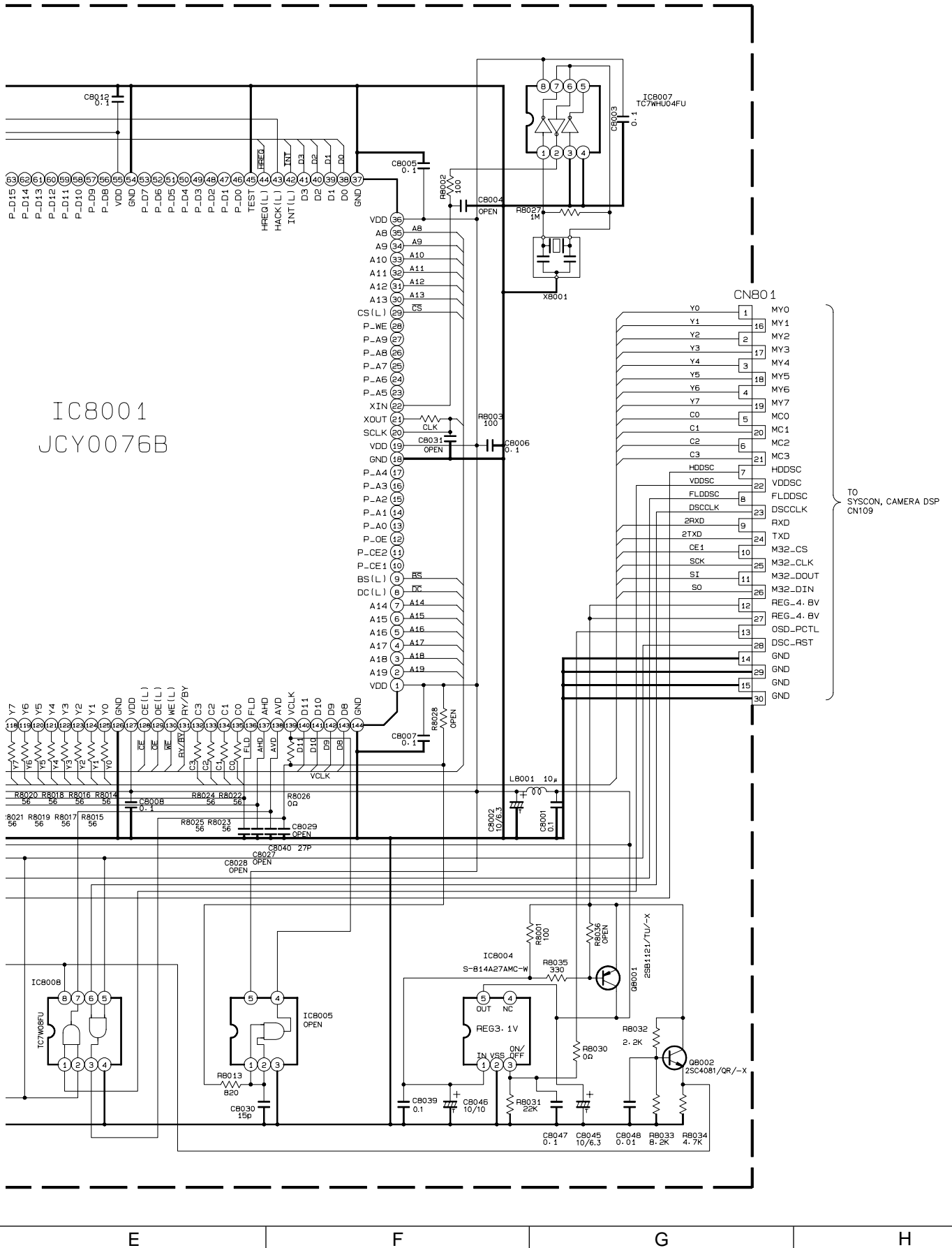
A

B

C

D





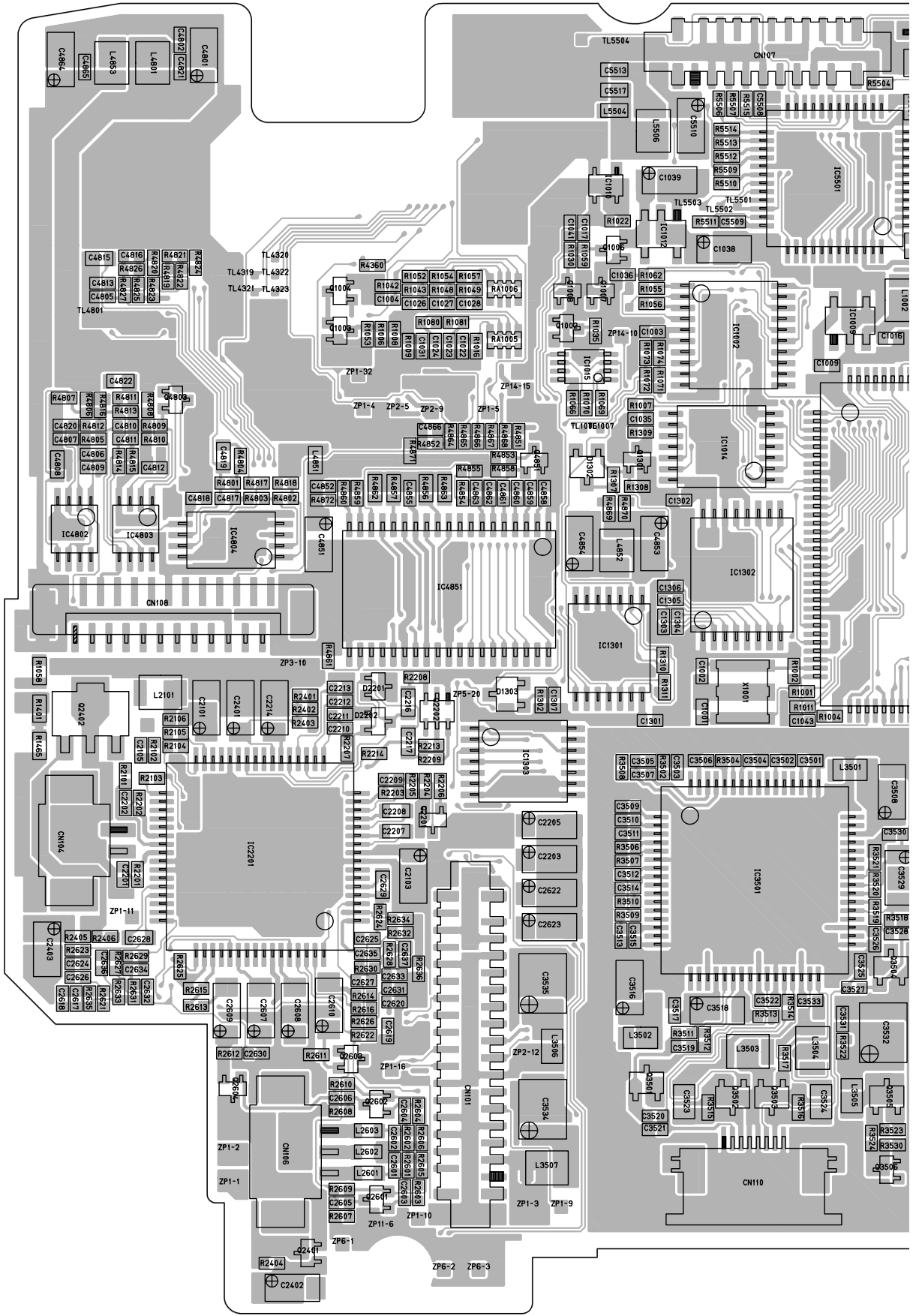
# 4.5 MAIN CIRCUIT BOARD

A

B

C

D



5

4

3



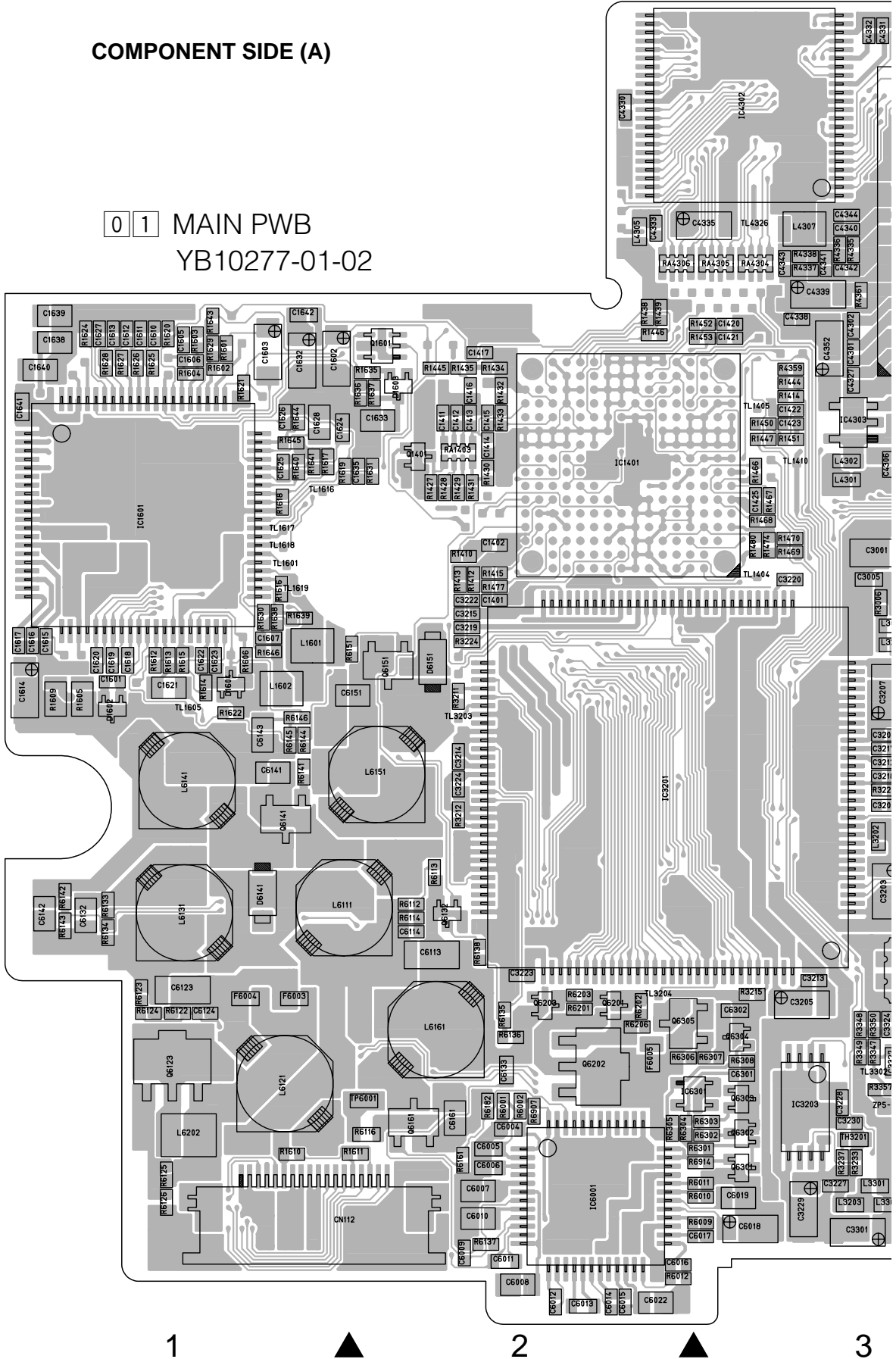
# COMPONENT PARTS LOCATION GUIDE (MAIN)

REF.No.	LOCATION			REF.No.	LOCATION			REF.No.	LOCATION			REF.No.	LOCATION			REF.No.	LOCATION						
<b>CAPACITOR</b>																							
C1001	B	C	3C	C2606	B	C	4D	C3502	B	C	3C	C4803	A	C	5A	CN105	B	C	1B	L4305	A	C	2A
C1002	B	C	3B	C2607	B	C	5C	C3503	B	C	3C	C4804	A	C	5A	CN106	B	C	4D	L4306	A	C	3B
C1003	B	C	4A	C2608	B	C	4C	C3504	B	C	3C	C4805	A	C	5A	CN107	B	C	3A	L4307	A	C	3A
C1004	B	C	3A	C2610	B	C	5C	C3505	B	C	3C	C4806	A	C	5B	CN108	B	C	5B	L4801	A	C	5A
C1008	B	C	2B	C2617	B	C	5C	C3506	B	C	3C	C4807	A	C	5B	CN109	B	C	1C	L4802	A	C	5A
C1009	B	C	3B	C2618	B	C	5C	C3507	B	C	3C	C4808	A	C	5B	CN110	B	C	3D	L4851	B	C	4B
C1010	B	C	3A	C2619	B	C	4D	C3508	B	C	3C	C4809	A	C	5B	CN111	A	C	5B	L4852	B	C	4B
C1011	B	C	2C	C2620	B	C	4C	C3509	B	C	3C	C4810	A	C	5B	CN112	A	C	1D	L4853	B	C	5A
C1012	B	C	2C	C2622	B	C	4C	C3510	B	C	3C	C4811	A	C	5B	CN113	B	C	2D	L5501	B	C	2A
C1013	B	C	1C	C2623	B	C	4C	C3511	B	C	3C	C4812	A	C	5B	CN114	B	C	1B	L5502	B	C	2A
C1014	B	C	2B	C2624	B	C	5C	C3512	B	C	4C	C4814	A	C	5A	<b>DIODE</b>							
C1015	B	C	1C	C2625	B	C	4C	C3514	B	C	3C	C4815	B	C	5A	D1001	B	C	1C	L5505	B	C	2A
C1016	B	C	3A	C2626	B	C	5C	C3515	B	C	3C	C4816	B	C	5A	D1302	B	C	4B	L5506	B	C	3A
C1017	B	C	4A	C2627	B	C	4C	C3516	B	C	3C	C4817	B	C	5B	D1303	B	C	4C	L6001	B	C	2D
C1019	B	C	1B	C2628	B	C	5C	C3517	B	C	3C	C4818	B	C	5B	D1602	A	C	1C	L6002	B	C	2D
C1021	B	C	2B	C2629	B	C	4C	C3518	B	C	3C	C4819	B	C	5B	D1603	A	C	2B	L6111	A	C	1C
C1022	B	C	4B	C2630	B	C	5D	C3519	B	C	3D	C4820	B	C	5B	D1604	A	C	1B	L6114	A	C	1C
C1023	B	C	4B	C2631	B	C	4C	C3520	B	C	3D	C4821	B	C	5A	D2201	B	C	4C	L6121	A	C	1D
C1024	B	C	4B	C2632	B	C	5C	C3521	B	C	3D	C4822	B	C	5B	D2202	B	C	4C	L6123	A	C	1C
C1026	B	C	4A	C2633	B	C	4C	C3522	B	C	3C	C4851	B	C	4B	D5501	B	C	3A	L6124	B	C	1C
C1027	B	C	4A	C2634	B	C	5C	C3523	B	C	3D	C4852	B	C	4B	D6111	B	C	2C	L6131	A	C	1C
C1028	B	C	4A	C2635	B	C	4C	C3524	B	C	3D	C4853	B	C	3B	D6121	B	C	1D	L6141	A	C	1C
C1031	B	C	4B	C2636	B	C	5C	C3525	B	C	3C	C4854	B	C	4B	D6122	B	C	1C	L6151	A	C	2C
C1032	B	C	2B	C2637	B	C	4C	C3526	B	C	3C	C4855	B	C	4B	D6131	B	C	2C	L6161	A	C	2C
C1034	B	C	1B	C3001	A	C	3B	C3527	B	C	3C	C4858	B	C	4B	D6141	A	C	1C	L6202	A	C	1D
C1035	B	C	3B	C3002	A	C	3B	C3528	B	C	3C	C4859	B	C	4B	D6151	A	C	2B	L6401	A	C	2D
C1036	B	C	4A	C3003	A	C	3B	C3529	B	C	3C	C4860	B	C	4B	D6152	B	C	2C	<b>TRANSISTOR</b>			
C1037	B	C	1A	C3004	A	C	3B	C3530	B	C	3C	C4861	B	C	4B	D6161	B	C	2C	Q1002	B	C	4A
C1038	B	C	3A	C3005	A	C	3C	C3531	B	C	3C	C4862	B	C	4B	D6163	B	C	2C	Q1003	B	C	4A
C1039	B	C	2A	C3006	A	C	4C	C3532	B	C	3C	C4863	B	C	4B	D6165	B	C	2C	Q1004	B	C	4A
C1040	B	C	3B	C3007	A	C	3C	C3533	B	C	3C	C4864	B	C	4B	<b>IC</b>							
C1041	B	C	4A	C3009	A	C	4B	C3534	B	C	4C	C4865	B	C	5A	IC1001	B	C	2B	Q1007	B	C	4A
C1042	B	C	2B	C3010	A	C	4B	C3535	B	C	4C	C4866	B	C	5A	IC1002	B	C	3A	Q1008	B	C	4A
C1043	B	C	3C	C3011	A	C	4B	C3701	A	C	5A	C5501	A	C	2A	IC1003	B	C	2C	Q1009	B	C	2C
C1301	B	C	3C	C3012	A	C	4B	C3702	A	C	5A	C5503	A	C	2A	IC1004	B	C	2C	Q1010	B	C	2C
C1302	B	C	3B	C3022	A	C	4B	C3703	A	C	5B	C5504	A	C	2B	IC1009	B	C	3A	Q1301	B	C	3B
C1303	B	C	3B	C3023	A	C	4B	C3704	A	C	5B	C5505	A	C	2B	IC1010	B	C	4A	Q1401	A	C	2B
C1304	B	C	3B	C3027	A	C	4C	C3705	A	C	5A	C5506	A	C	2A	IC1011	B	C	4A	Q1402	B	C	1B
C1305	B	C	3B	C3028	A	C	4C	C3706	A	C	5B	C5507	A	C	2A	IC1012	B	C	3A	Q1403	B	C	1B
C1306	B	C	3B	C3035	A	C	4B	C3707	A	C	5B	C5508	B	C	3A	IC1014	B	C	3B	Q1601	A	C	2B
C1307	B	C	4C	C3037	A	C	4C	C3708	A	C	5A	C5509	B	C	3A	IC1015	B	C	4B	Q2201	B	C	4C
C1401	A	C	2B	C3038	A	C	4C	C3709	A	C	5B	C5510	B	C	3A	IC1301	B	C	4B	Q2202	B	C	4C
C1402	A	C	2B	C3040	A	C	4B	C3710	A	C	5B	C5511	B	C	3A	IC1302	B	C	3B	Q2401	B	C	4C
C1411	A	C	2B	C3041	A	C	4B	C3711	A	C	5B	C5512	B	C	2A	IC1303	B	C	4C	Q2402	B	C	4D
C1412	A	C	2B	C3042	A	C	4B	C3712	A	C	5B	C5513	B	C	4A	IC1401	A	C	2B	Q2601	B	C	5C
C1413	A	C	2B	C3047	A	C	4C	C3713	A	C	5B	C5514	B	C	3A	IC1402	B	C	1A	Q2602	B	C	4D
C1414	A	C	2B	C3048	A	C	4C	C3714	A	C	5B	C5515	B	C	2A	IC1403	B	C	1B	Q2603	B	C	4D
C1415	A	C	2B	C3049	A	C	4C	C4201	A	C	5A	C5516	B	C	2B	IC1405	B	C	1B	Q2604	B	C	4D
C1416	A	C	2B	C3050	A	C	4B	C4202	A	C	5A	C5517	B	C	4A	IC1601	A	C	1B	Q2605	B	C	5D
C1417	A	C	2B	C3101	A	C	5C	C4203	A	C	5A	C5518	B	C	3A	IC2201	B	C	5C	Q3501	B	C	3D
C1418	B	C	1B	C3102	A	C	5C	C4204	A	C	5A	C5519	B	C	2A	IC3001	A	C	4B	Q3502	B	C	3D
C1419	B	C	1B	C3103	A	C	5C	C4205	A	C	5A	C6001	B	C	1C	IC3002	A	C	4C	Q3503	B	C	3D
C1420	A	C	3A	C3104	A	C	5C	C4206	A	C	5A	C6002	B	C	1D	IC3004	A	C	3B	Q3504	B	C	3C
C1421	A	C	3A	C3105	A	C	5C	C4207	A	C	5A	C6003	B	C	2D	IC3005	A	C	4B	Q3505	B	C	3D
C1422	A	C	3B	C3106	A	C	5C	C4208	A	C	5A	C6004	A	C	2D	IC3007	A	C	3C	Q3506	B	C	3D
C1423	A	C	3B	C3107	A	C	5C	C4209	A	C	4A	C6005	A	C	2D	IC3101	A	C	5C	Q3701	A	C	5A
C1424	B	C	1B	C3108	A	C	4C	C4210	A	C	5A	C6006	A	C	2D	IC3201	A	C	2C	Q3702	A	C	5A
C1425	B	C	3B	C3109	A	C	5C	C4211	A	C	5A	C6007	A	C	2D	IC3202	A	C	4D	Q3703	A	C	5B
C1601	A	C	1B	C3203	A	C	3C	C4212	A	C	5A	C6008	A	C	2D	IC3203	A	C	3D	Q3704	A	C	5B
C1602	A	C	1B	C3204	A	C	3C	C4213	A	C	5A	C6009	A	C	2D	IC3301	A	C	4D	Q3705	A	C	5B
C1603	A	C	1B	C3205	A	C	3C	C4214	A	C	5A	C6010	A	C	2D	IC3501	B	C	3C	Q3706	A	C	5B
C1605	A	C	1A	C3207	A	C	3C	C4215	A	C	4A	C6011	A	C	2D	IC3701	A	C	5B	Q3707	A	C	5B
C1606	A	C	1B	C3208	A	C	3C	C4216	A	C	4A	C6012	A	C	2D	IC4201	A	C	4A	Q3708	A	C	5A
C1607	A	C	1B	C3211	A	C	3C	C4217	A	C	4A	C6013	A	C	2D	IC4202	A	C	5A	Q3709	A	C	5B
C1610	A	C	1A	C3212	A	C	3C	C4301	A	C	3B	C6014	A	C	2D	IC4301	A	C	3A	Q3710	A	C	5B
C1611	A	C	1A	C3213	A	C																	

REF.No.	LOCATION	REF.No.	LOCATION	REF.No.	LOCATION	REF.No.	LOCATION	REF.No.	LOCATION	REF.No.	LOCATION	REF.No.	LOCATION										
R1018	B	C	2B	R1618	A	C	1B	R3233	A	C	3D	R4317	A	C	4B	R6132	B	C	2C	TL1617	A	C	1B
R1021	B	B	2B	R1619	A	A	1B	R3234	A	A	4D	R4318	A	C	4B	R6133	A	C	1C	TL1618	A	A	1B
R1022	B	B	4A	R1620	A	A	1B	R3236	A	A	3D	R4328	A	C	4B	R6134	A	C	1C	TL1619	A	A	1B
R1025	B	B	2B	R1621	A	A	1C	R3237	A	A	4D	R4329	A	C	4A	R6135	A	C	2C	TL3004	A	A	4C
R1026	B	B	2B	R1622	A	A	1C	R3301	A	C	4D	R4330	A	C	3A	R6136	A	C	2D	TL3005	A	A	3B
R1030	B	B	4A	R1624	A	A	1A	R3303	A	C	4D	R4333	A	C	4B	R6137	A	C	2D	TL3006	A	A	3B
R1034	B	B	2B	R1625	A	A	1B	R3304	A	A	4D	R4334	A	C	4B	R6138	A	C	2C	TL3007	A	A	4B
R1035	B	B	4A	R1626	A	A	1B	R3306	A	C	4D	R4335	A	C	3A	R6141	A	C	1C	TL3008	A	A	4B
R1037	B	B	2C	R1627	A	A	1B	R3307	A	C	4D	R4336	A	C	3A	R6142	A	C	1C	TL3010	A	A	4B
R1038	B	B	2C	R1628	A	A	1B	R3308	A	C	4D	R4337	A	C	3A	R6143	A	C	1C	TL3011	A	A	4B
R1039	B	B	2C	R1629	A	A	1B	R3309	A	C	4D	R4338	A	C	3A	R6144	A	C	1C	TL3012	A	A	4B
R1042	B	B	4A	R1630	A	A	1B	R3310	A	C	4D	R4339	A	C	3B	R6145	A	C	1C	TL3201	A	A	4D
R1043	B	B	4A	R1631	A	A	2B	R3312	A	C	4D	R4341	A	C	4B	R6146	A	C	1C	TL3202	A	A	2B
R1045	B	B	2C	R1635	A	A	2B	R3313	A	C	4D	R4342	A	C	4B	R6151	A	C	2B	TL3203	A	A	2C
R1046	B	B	2C	R1636	A	A	2B	R3314	A	C	4D	R4343	A	C	4B	R6152	B	C	1C	TL3204	A	A	2C
R1047	B	B	2B	R1637	A	A	2B	R3315	A	C	4D	R4344	A	C	4B	R6153	B	C	2C	TL3205	A	A	4D
R1048	B	B	4A	R1638	A	A	1B	R3316	A	C	4D	R4345	A	C	4A	R6154	B	C	1C	TL3206	A	A	3B
R1049	B	B	4A	R1639	A	A	1B	R3317	A	C	4D	R4346	A	C	4B	R6161	A	C	2D	TL3301	A	A	4D
R1050	B	B	3C	R1640	A	A	1B	R3318	A	C	4D	R4347	A	C	4B	R6162	B	C	3C	TL3302	A	A	3D
R1051	B	B	2C	R1641	A	A	1B	R3319	A	C	4D	R4348	A	C	4B	R6163	B	C	2C	TL3701	A	A	3A
R1052	B	B	4A	R1643	A	A	1A	R3330	A	C	4D	R4349	A	C	4B	R6164	B	C	2C	TL4201	A	A	5A
R1053	B	B	4A	R1644	A	A	1B	R3331	A	C	4D	R4350	A	C	4B	R6165	B	C	2C	TL4301	A	A	3A
R1054	B	B	4A	R1645	A	A	1B	R3332	A	C	4D	R4351	A	C	4B	R6166	B	C	3C	TL4302	A	A	2A
R1055	B	B	3A	R1646	A	A	1B	R3333	A	C	4D	R4352	A	C	4A	R6167	B	C	2C	TL4303	A	A	3A
R1056	B	B	3A	R2101	B	C	5C	R3334	A	C	4D	R4353	A	C	4A	R6168	B	C	2C	TL4304	A	A	3A
R1057	B	B	4A	R2102	B	C	5C	R3335	A	C	4D	R4354	A	C	3B	R6169	B	C	2C	TL4305	A	A	2A
R1058	B	B	5B	R2103	B	C	5C	R3336	A	C	4D	R4355	A	C	3B	R6170	B	C	2C	TL4306	A	A	3A
R1059	B	B	4A	R2104	B	C	5C	R3337	A	C	4D	R4356	A	C	4B	R6171	B	C	3C	TL4309	A	A	2A
R1060	B	B	2B	R2105	B	C	5C	R3338	A	C	4D	R4357	A	C	4A	R6172	B	C	3C	TL4310	A	A	3A
R1062	B	B	3A	R2106	B	C	5C	R3339	A	C	4D	R4358	A	C	4A	R6173	B	C	2C	TL4311	A	A	3A
R1063	B	B	1B	R2201	B	C	5C	R3341	A	C	3C	R4359	B	C	3B	R6174	B	C	2C	TL4312	A	A	4B
R1065	B	B	2B	R2202	B	C	5C	R3343	A	C	3C	R4361	B	C	3B	R6175	B	C	2C	TL4319	B	C	5A
R1066	B	B	4B	R2203	B	C	4C	R3344	A	C	3D	R4801	B	C	3A	R6176	B	C	2C	TL4320	B	C	5A
R1067	B	B	2B	R2204	B	C	4C	R3345	A	C	3D	R4802	B	C	5B	R6177	B	C	2C	TL4321	B	C	5A
R1068	B	B	3C	R2205	B	C	4C	R3346	A	C	3D	R4803	B	C	5B	R6178	B	C	2C	TL4322	B	C	5A
R1069	B	B	4B	R2206	B	C	4C	R3347	A	C	3D	R4803	B	C	5B	R6179	B	C	3C	TL4323	B	C	5A
R1070	B	B	4B	R2207	B	C	4C	R3348	A	C	3C	R4804	B	C	5B	R6180	B	C	2C	TL4324	A	A	2A
R1071	B	B	3B	R2208	B	C	4B	R3349	A	C	3D	R4805	B	C	5B	R6181	B	C	2C	TL4325	A	A	2A
R1072	B	B	3B	R2209	B	C	4C	R3350	A	C	3C	R4806	B	C	5B	R6182	A	C	2D	TL4326	A	A	3A
R1073	B	B	3B	R2213	B	C	4C	R3351	A	C	3D	R4807	B	C	5B	R6183	B	C	3C	TL4327	A	A	3A
R1074	B	B	3B	R2214	B	C	4C	R3357	A	C	3D	R4808	B	C	5B	R6201	A	C	2C	TL4328	A	A	3A
R1076	B	B	2B	R2401	B	C	4C	R3361	A	C	3D	R4809	B	C	5B	R6202	A	C	2C	TL4801	B	C	5A
R1077	B	B	2B	R2402	B	C	4C	R3362	A	C	3D	R4810	B	C	5B	R6203	A	C	2C	TL5501	B	C	3A
R1078	B	B	2B	R2403	B	C	4C	R3363	A	C	3D	R4811	B	C	5B	R6204	B	C	2D	TL5502	B	C	3A
R1079	B	B	2B	R2404	B	C	5D	R3364	A	C	3D	R4812	B	C	5B	R6205	B	C	2C	TL5503	B	C	3A
R1080	B	B	4A	R2405	B	C	5C	R3365	A	C	3D	R4813	B	C	5B	R6206	A	C	2C	TL5504	B	C	4A
R1081	B	B	4A	R2406	B	C	5C	R3366	A	C	3D	R4814	B	C	5B	R6301	A	C	3D	TM2	A	A	1A
R1082	B	B	2C	R2601	B	C	4D	R3367	A	C	4D	R4815	B	C	5B	R6302	A	C	3D	TM4	A	A	4A
R1083	B	B	2C	R2602	B	C	4D	R3379	A	C	4D	R4816	B	C	5B	R6303	A	C	3D	TM6	A	A	1A
R1084	B	B	2C	R2603	B	C	4D	R3380	A	C	3D	R4817	B	C	5B	R6304	A	C	2D	TM8	A	A	4A
R1085	B	B	2C	R2604	B	C	4D	R3502	B	C	3C	R4818	B	C	5B	R6305	A	C	2D	TP6001	A	A	2D
R1302	B	B	4C	R2605	B	C	4D	R3504	B	C	3C	R4819	B	C	5A	R6306	A	C	2D	X1001	B	C	3C
R1307	B	B	4B	R2606	B	C	4D	R3506	B	C	3C	R4820	B	C	5A	R6307	A	C	3D	X1002	B	C	2B
R1308	B	B	3B	R2607	B	C	4D	R3507	B	C	3C	R4821	B	C	5A	R6308	A	C	3D	X3001	A	A	4B
R1309	B	B	3B	R2608	B	C	4D	R3508	B	C	4C	R4822	B	C	5A	R6907	A	C	3D	X3301	A	A	3C
R1310	B	B	3B	R2609	B	C	4D	R3509	B	C	4C	R4823	B	C	5A	R6914	A	C	3D	X5501	B	C	2A
R1311	B	B	5C	R2610	B	C	4D	R3510	B	C	3C	R4824	B	C	5A	RA1001	B	C	2B	ZP1-1	B	C	5D
R1401	B	B	5C	R2611	B	C	4D	R3511	B	C	3D	R4825	B	C	5A	RA1002	B	C	2B	ZP1-10	B	C	5C
R1408	B	B	1B	R2612	B	C	5D	R3512	B	C	3D	R4826	B	C	5A	RA1003	B	C	2B	ZP1-11	B	C	5C
R1410	A	A	2B	R2613	B	C	5C	R3513	B	C	3D	R4827	B	C	5A	RA1004	B	C	2B	ZP1-13	A	A	5B
R1412	A	A	2B	R2614	B	C	4C	R3514	B	C	3C	R4828	B	C	4B	RA1005	B	C	4A	ZP1-14	A	A	4B
R1413	A	A	3B	R2615	B	C	4C	R3515	B	C	3D	R4851	B	C	4B	RA1006	B	C	4A	ZP1-14	A	A	4B
R1414	A	A	2B	R2616	B	C	5C	R3516	B	C	3D	R4852	B	C	4B	RA1008	B	C	4A	ZP1-14	A	A	5B
R1415	A	A	2B	R2621	B	C	5C	R3517	B	C	3D	R4853	B	C	4B	RA1401	B	C	1B	ZP1-15	A	A	5B
R1420	B	B	1B	R2622	B	C	4D	R3518	B	C	3C	R4854	B	C	4B	RA1402	B	C	1B	ZP1-16	B	C	4D
R1427	A	A	2B	R2623	B	C	5C	R3519	B	C	3C	R4855	B	C	4B	RA1403	A	C	2B	ZP1-16	B	C	4D
R1428	A	A	2B	R2624	B	C	4C	R3520	B	C	3C	R4856	B	C	4B	RA4301	A	C	4A	ZP1-2	B	C	5D
R1429	A	A	2B	R2625	B	C	5C	R3521	B	C	3C	R4857	B	C	4B	RA4302	A	C	4A	ZP1-23	B	C	2D
R1430	A	A	2B	R2626	B	C	4C	R3522	B	C	3D	R4858	B	C	4B	RA4303	A	C	4A	ZP1-24	A	A	2C
R1431	A	A	2B	R2627	B	C	5C	R3523	B	C	3D	R4859	B	C	4B	RA4304	A	C	3A	ZP1-24	A	A	4D
R1432	A	A	2B	R2628	B	C	4C	R3524	B	C	3D	R4860	B	C	4B	RA4305	A	C	3A	ZP1-3	B	C	4D
R1433	A	A	2B	R2629	B	C	5C	R3525	B	C	3D	R4861	B	C	4B	RA4306	A	C	2A	ZP1-31	B	C	2B
R1434	A	A	2B	R2630	B	C	4C	R3701	A	C	5A	R4862	B	C	4B					ZP1-32	B	C	4B
R1435	A	A	2B	R2631	B	C	5C	R3702	A	C	5A	R4863	B	C	4B					ZP1-4	B	C	4B
R1438	A	A	2A	R2632	B	C	4C	R3703	A	C	5A	R4864	B	C	4B					ZP1-4	B	C	4B
R1439	A	A	2A	R2633	B	C	5C	R3704	A	C	5A	R4865	B	C	4B		</						

COMPONENT SIDE (A)

01 MAIN PWB  
YB10277-01-02



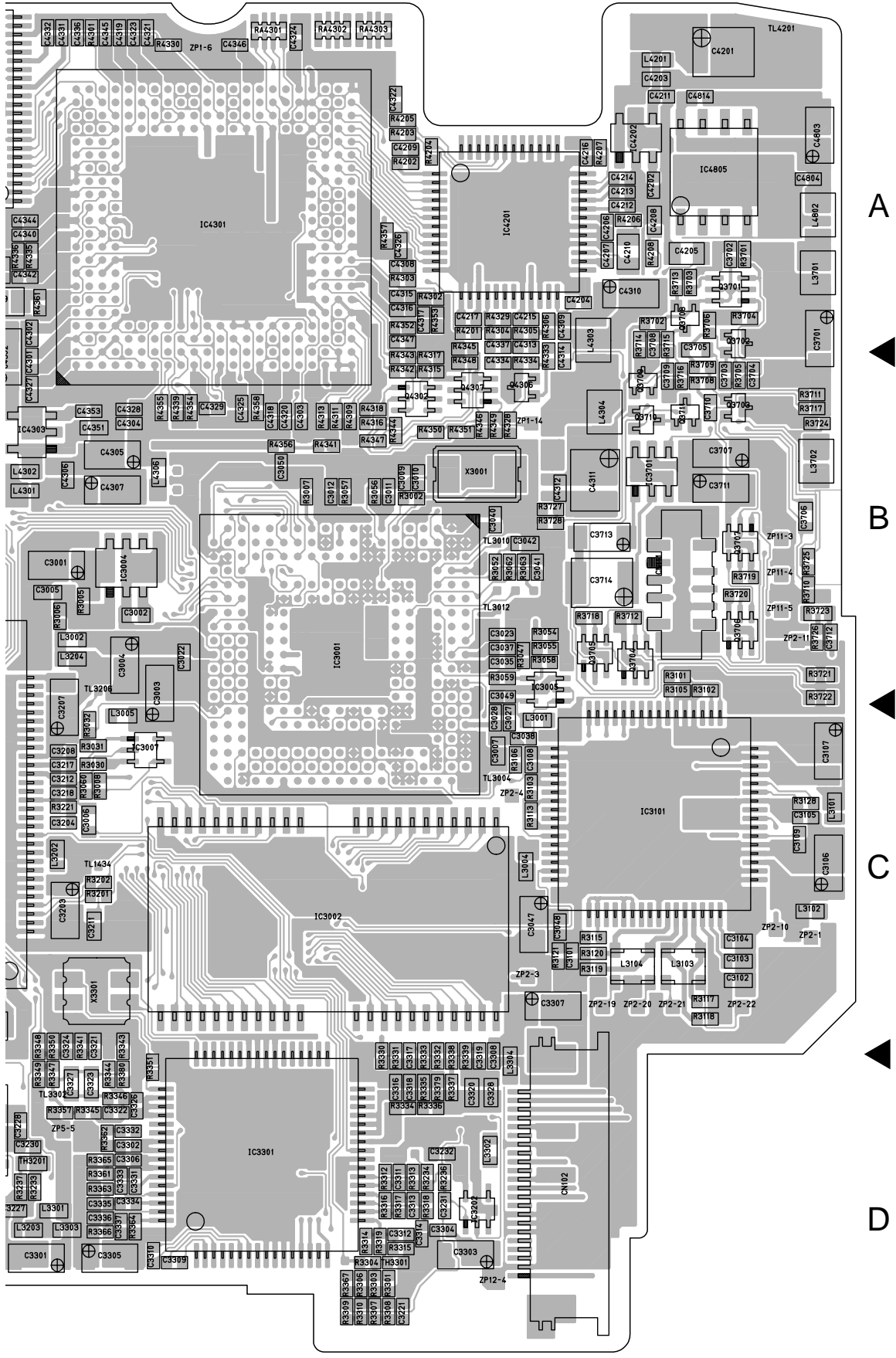
1



2



3



3

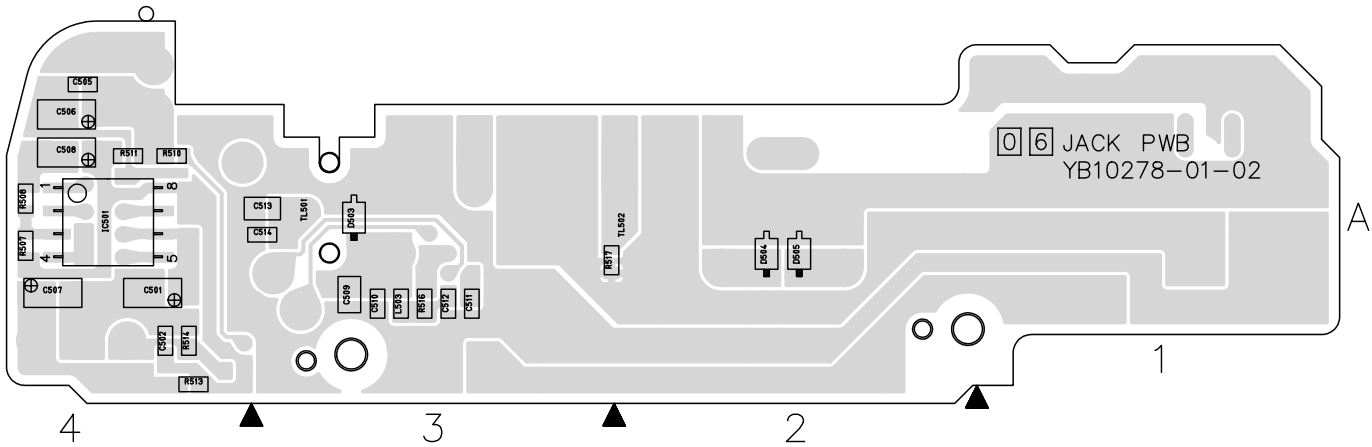
4

5

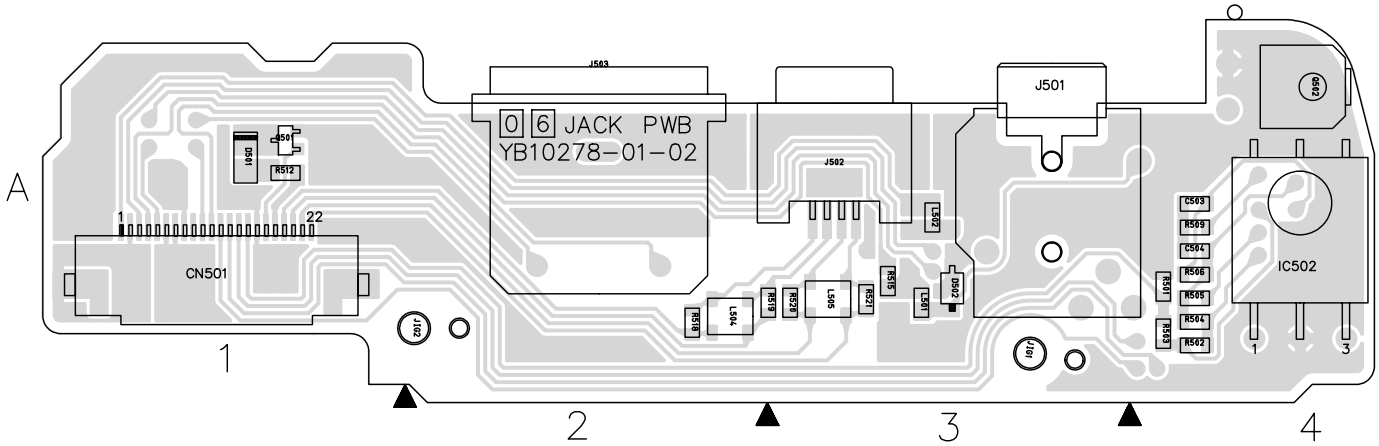
## 4.6 JACK, REAR AND JUNCTION CIRCUIT BOARDS

– JACK –

FOIL SIDE (B)



COMPONENT SIDE (A)



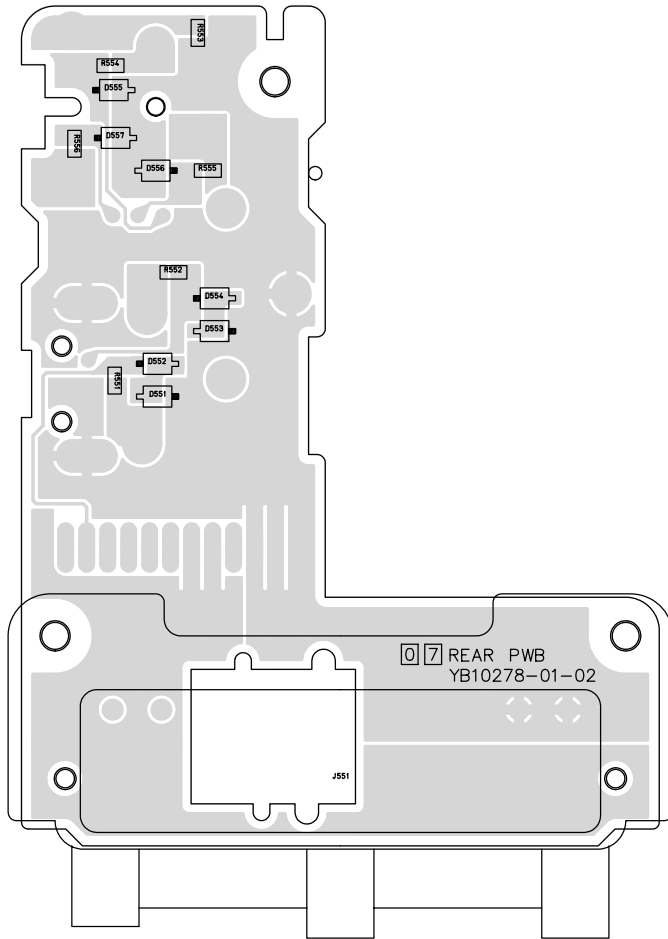
COMPONENT PARTS LOCATION GUIDE (JACK)

REF.No.	LOCATION	REF.No.	LOCATION	REF.No.	LOCATION	REF.No.	LOCATION	REF.No.	LOCATION
<b>CAPACITOR</b>		<b>CONNECTOR</b>		<b>COIL</b>		R504	A C 4A	R519	A C 3A
C501	B C 4A	CN501	A C 1A	L501	A C 3A	R505	A C 4A	R520	A C 3A
C502	B C 4A	<b>DIODE</b>		L502	A C 3A	R506	A C 4A	R521	A C 3A
C503	A C 4A	D501	A C 1A	L503	B C 3A	R507	B C 4A	<b>OTHER</b>	
C504	A C 4A	D502	A C 3A	L504	A C 2A	R508	B C 4A	J501	A D 3A
C505	B C 4A	D503	B C 3A	L505	A C 3A	R509	A C 4A	J502	A C 3A
C506	B C 4A	D504	B C 2A	<b>TRANSISTOR</b>		R510	B C 4A	J503	A D 2A
C507	B C 4A	D505	B C 2A	Q501	A C 1A	R511	B C 4A	TL501	B C 3A
C508	B C 4A	<b>IC</b>		Q502	A D 4A	R512	A C 1A	TL502	B C 2A
C509	B C 3A	IC501	B C 4A	<b>RESISTOR</b>		R513	B C 4A		
C510	B C 3A	IC502	A D 4A	R501	A C 4A	R514	B C 4A		
C511	B C 3A			R502	A C 4A	R515	A C 3A		
C512	B C 3A			R503	A C 4A	R516	B C 3A		
C513	B C 3A					R517	B C 3A		
C514	B C 3A					R518	A C 2A		

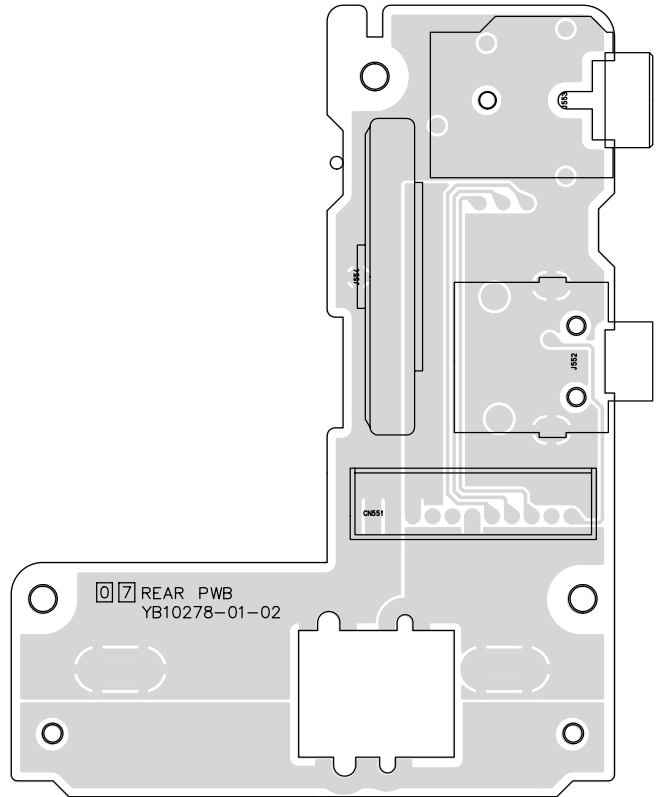


- REAR -

FOIL SIDE (B)

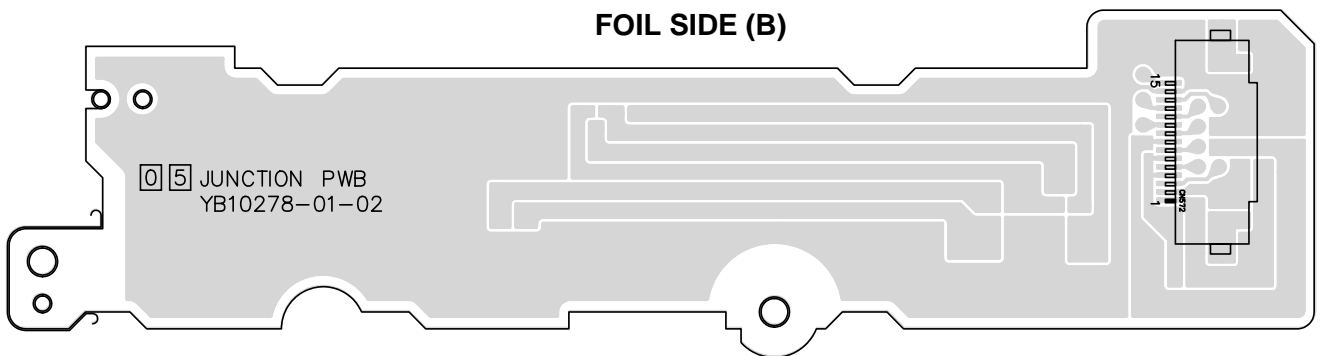


COMPONENT SIDE (A)

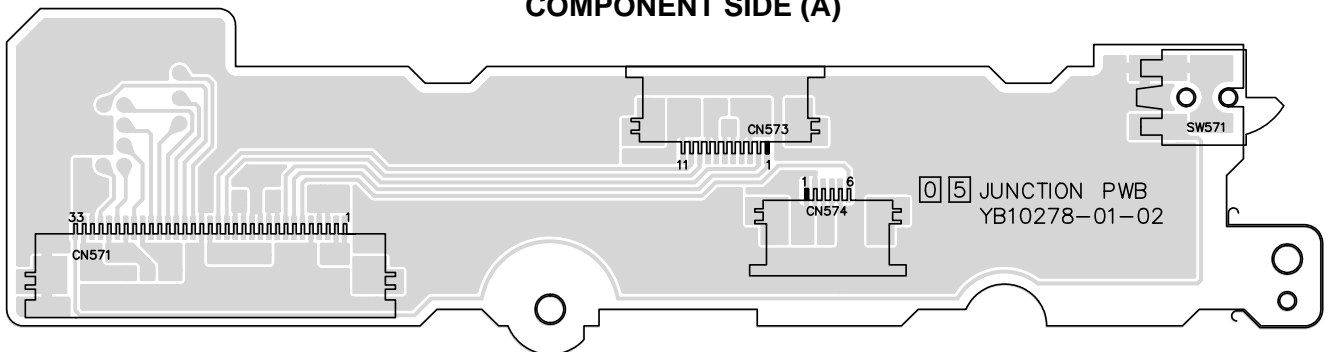


- JUNCTION -

FOIL SIDE (B)



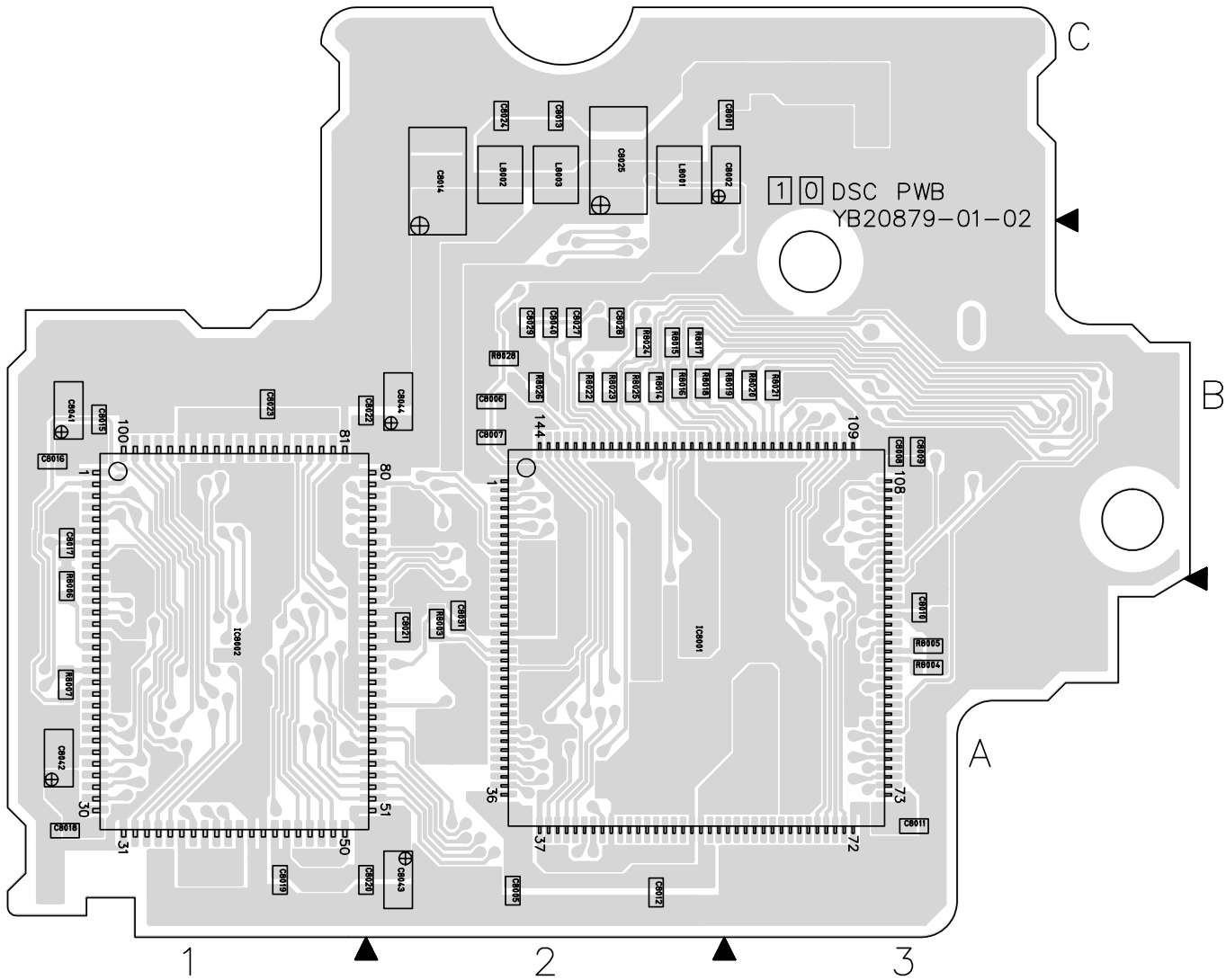
COMPONENT SIDE (A)



## 4.7 DSC CIRCUIT BOARD

(FOR DVL800)

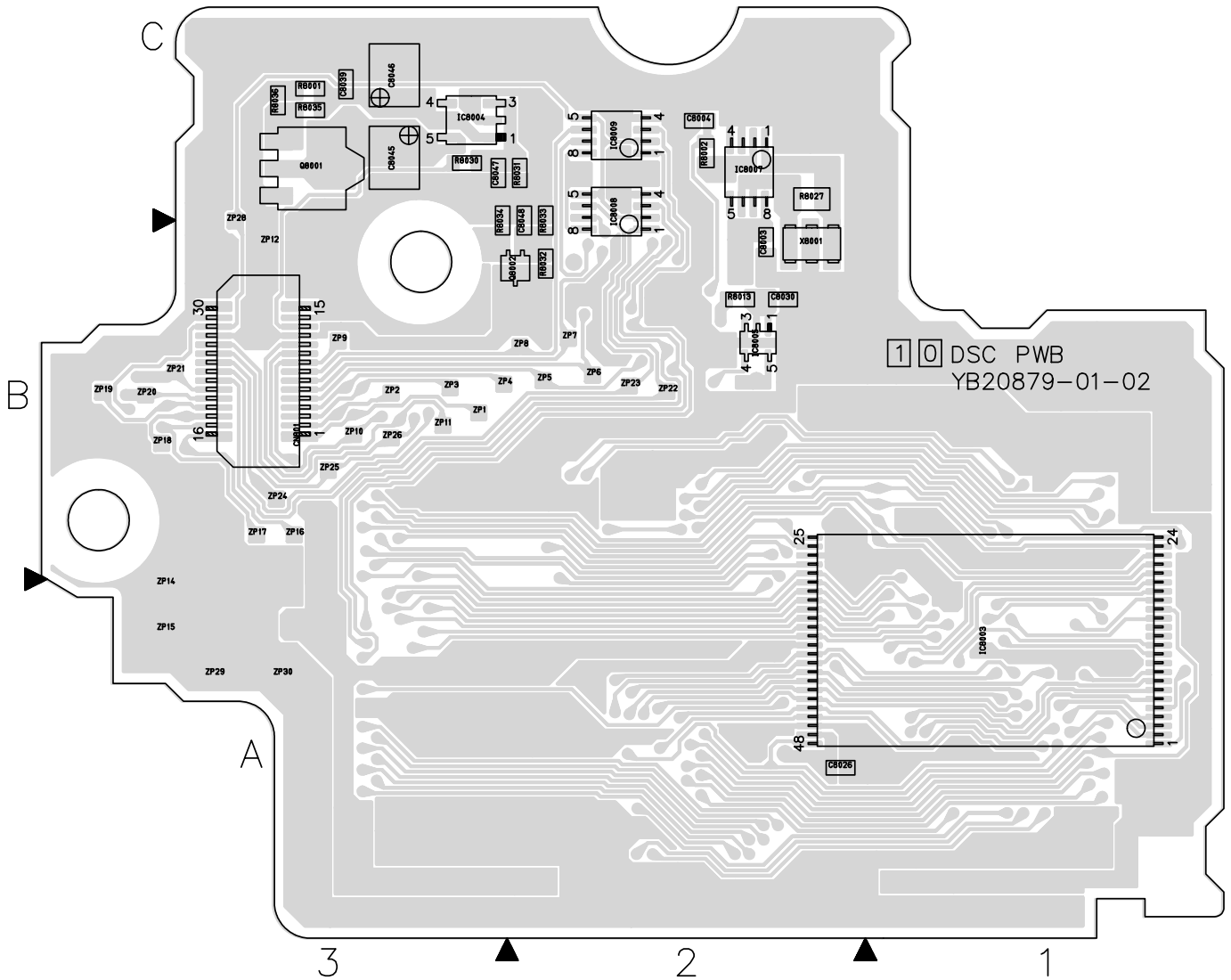
FOIL SIDE (B)



**COMPONENT PARTS LOCATION GUIDE (DSC)**

REF.No.	LOCATION			REF.No.	LOCATION			REF.No.	LOCATION		
<b>CAPACITOR</b>											
C8001	B	C	3C	C8016	B	C	1B	IC8002	B	C	1A
C8002	B	C	3C	C8017	B	C	1B	IC8003	A	C	1A
C8003	A	C	2B	C8018	B	C	1A	IC8004	A	C	3C
C8004	A	C	2C	C8019	B	C	1A	IC8005	A	C	2B
C8005	B	C	2A	C8020	B	C	2A	IC8007	A	C	2C
C8006	B	C	2B	C8021	B	C	2A	IC8008	A	C	2C
C8007	B	C	2B	C8022	B	C	2B	IC8009	A	C	2C
C8008	B	C	3B	C8023	B	C	1B	<b>COIL</b>			
C8009	B	C	3B	C8024	B	C	2C	L8001	B	C	2C
C8010	B	C	3A	C8025	B	C	2C	L8002	B	C	2C
C8011	B	C	3A	C8026	A	C	2A	L8003	B	C	2C
C8012	B	C	2A	C8027	B	C	2B	<b>TRANSISTOR</b>			
C8013	B	C	2C	C8028	B	C	2B	Q8001	A	C	3C
C8014	B	C	2C	C8029	B	C	2B	Q8002	A	C	2B
C8015	B	C	1B	C8030	A	C	2B				
				C8031	B	C	2A				
								<b>CONNECTOR</b>			
								CN801	A	C	3B
								<b>IC</b>			
								IC8001	B	C	2A

# COMPONENT SIDE (A)



REF.No.	LOCATION			REF.No.	LOCATION			REF.No.	LOCATION		
<b>RESISTOR</b>				<b>OTHER</b>				ZP16	A	C	3B
R8001	A	C	3C	R8021	B	C	3B	ZP17	A	C	3B
R8002	A	C	2C	R8022	B	C	2B	ZP18	A	C	3B
R8003	B	C	2A	R8023	B	C	2B	ZP19	A	C	4B
R8004	B	C	3A	R8024	B	C	2B	ZP20	A	C	4B
R8005	B	C	3A	R8025	B	C	2B	ZP21	A	C	3B
R8006	B	C	1B	R8026	B	C	2B	ZP22	A	C	2B
R8007	B	C	1A	R8027	A	C	2C	ZP23	A	C	2B
R8013	A	C	2B	R8028	B	C	2B	ZP24	A	C	3B
R8014	B	C	2B	R8030	A	C	3C	ZP25	A	C	3B
R8015	B	C	2B	R8031	A	C	2C	ZP26	A	C	3B
R8016	B	C	2B	R8032	A	C	2B	ZP28	A	C	3C
R8017	B	C	2B	R8033	A	C	2C	ZP29	A	C	3A
R8018	B	C	2B	R8034	A	C	3C	ZP30	A	C	3A
R8019	B	C	3B	R8035	A	C	3C				
R8020	B	C	3B	R8036	A	C	3C				
								X8001	A	C	2B
								ZP1	A	C	3B
								ZP2	A	C	3B
								ZP3	A	C	3B
								ZP4	A	C	3B
								ZP5	A	C	2B
								ZP6	A	C	2B
								ZP7	A	C	2B
								ZP8	A	C	2B
								ZP9	A	C	3B
								ZP10	A	C	3B
								ZP11	A	C	3B
								ZP12	A	C	3B
								ZP14	A	C	3B
								ZP15	A	C	3A